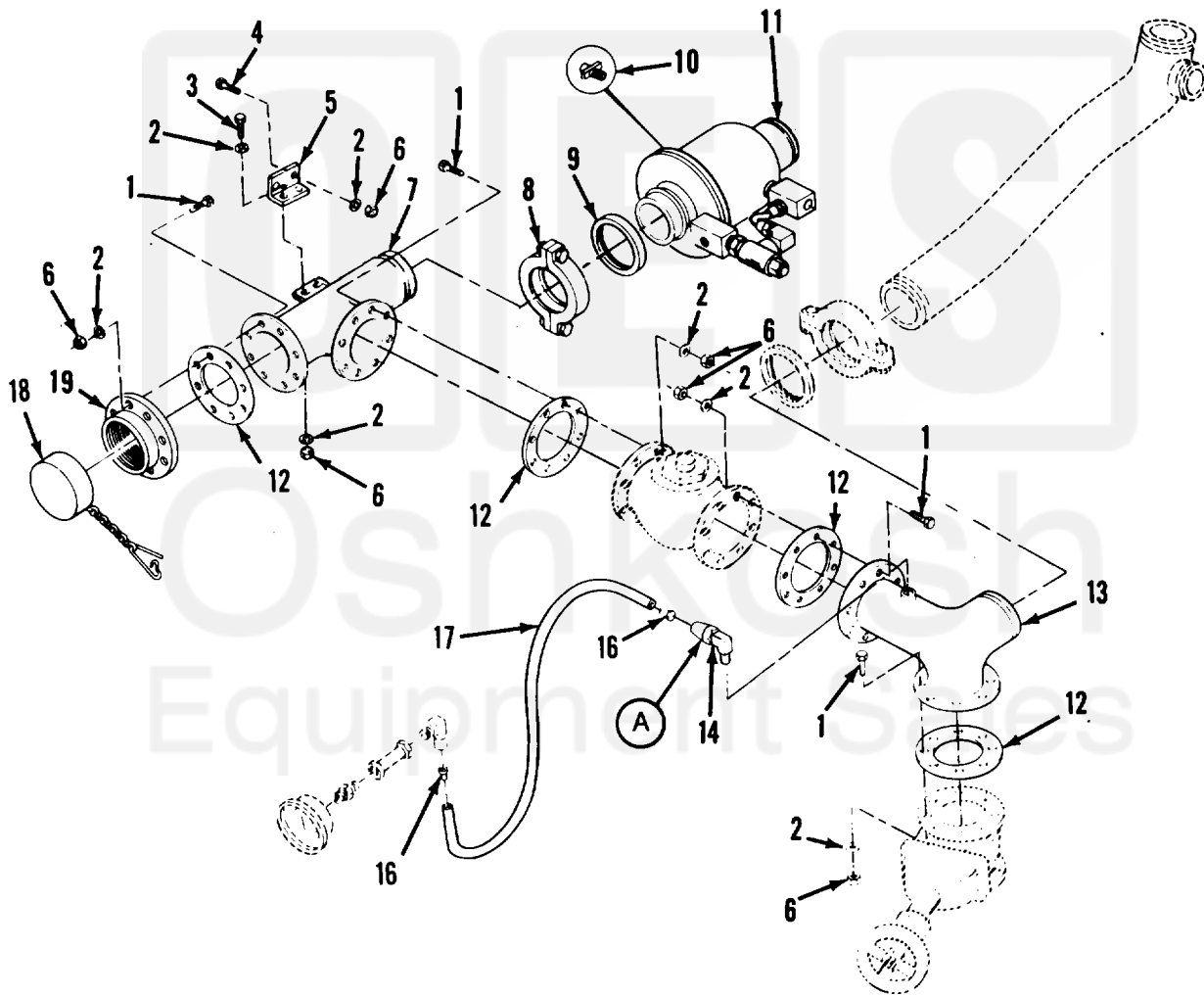
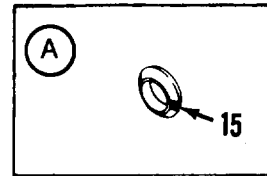


SECTION II

TM 9-2330-356-24P



TA502504

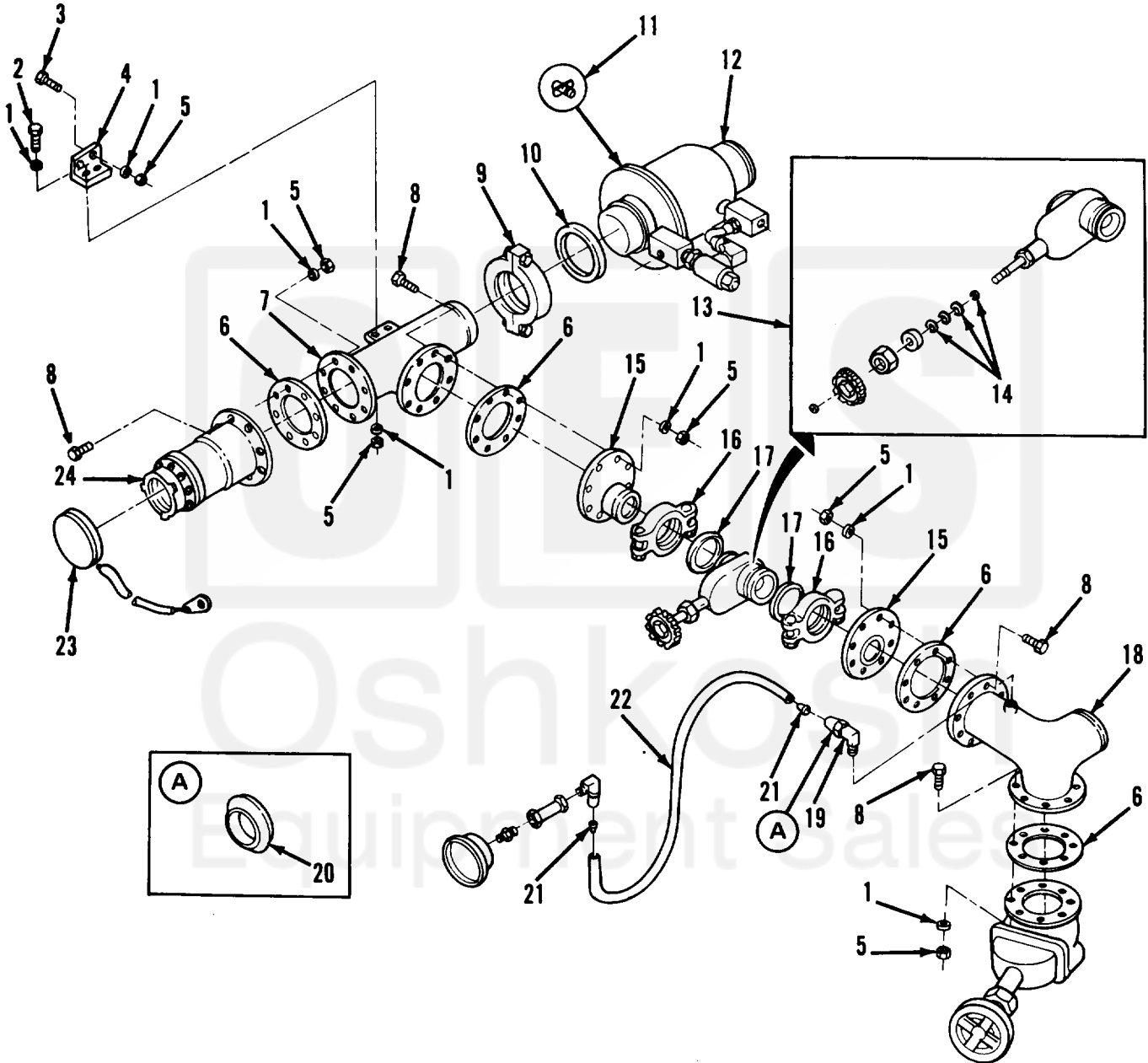
FIGURE 120. MANIFOLD AND FLANGE ASSEMBLY, M967, M967A1 , M969, AND M969A1.

Current part is item (12,6,9,13) on diagram. Available at www.oshkoshequipment.com

SECTION II (1) ITEM NO	(2) SMR CODE	(3) CAGEC	TM9-2330-356-24P (4) PART NUMBER	(5) DESCRIPTION AND USABLE ON CODES (UOC)	(6) QTY
GROUP 7203 VALVES, FITTINGS, LINES					
FIG. 120 MANIFOLD AND FLANGE ASSEMBLY, M967, M967A1, M969, AND M969A1					
1	PAOZZ	96906	MS90727-65	SCREW,CAP,HEXAGON H UOC:C70,C72,C90,C92	32
2	PAOZZ	96906	MS27183-14	WASHER,FLAT UOC:C70,C72,C90,C92	34
3	PAOZZ	96906	MS90727-63	SCREW,CAP,HEXAGON H UOC:C70,C72,C90,C92	2
4	PAOZZ	96906	MS90726-60	SCREW,CAP,HEXAGON H UOC:C70,C72,C90,C92	2
5	XBOZZ	19207	11670910	ANGLE UOC:C70,C72,C90,C92	1
6	PAOZZ	96906	MS51922-21	NUT,SELF-LOCKING,HE UOC:C70,C72,C90,C92	34
7	PBOZZ	19207	11670912	TEE UOC:C70,C72,C90,C92	1
8	PAOZZ	19207	11611885	COUPLER UOC:C70,C72,C90,C92	1
9	PAOZZ	19207	11611883	SEAL,NONMETALLIC SP UOC:C70,C72,C90,C92	1
10	PAOZZ	96906	MS35782-6	COCK,DRAIN UOC:C70,C72,C90,C92	1
11	PAOZZ	19207	11668076-2	CONTROL VALVE ASSY UOC:C70,C72,C90,C92	1
12	PAOZZ	19207	11670914	GASKET UOC:C70,C72,C90,C92	4
13	PAOZZ	19207	11670911	ELBOW,FLANGE UOC:C70,C72,C90,C92	1
14	PAOZZ	81343	4-2 120202BA	ELBOW,PIPE TO TUBE UOC:C70,C72,C90,C92	1
15	PAOZZ	96906	MS39197-1	SLEEVE UOC:C70,C72,C90,C92	1
16	PAOZZ	19207	CPR102321-3	INSERT UOC:C70,C72,C90,C92	2
17	MOOZZ	19207	12275283-7	TUBING (28.00" LG.) MAKE FROM P/N CPR104420-2 UOC:C70,C72,C90,C92	1
18	PAOZZ	96906	MS29526-2	CAP,FILLER OPENING UOC:C70,C72,C90,C92	1
19	PAOZZ	19207	12275377	COUPLING HALF QUICK DISCONNECT UOC:C70,C72,C90,C92	1

END OF FIGURE

Current part is item (12,6,9,13) on diagram. Available at www.oshkoshequipment.com



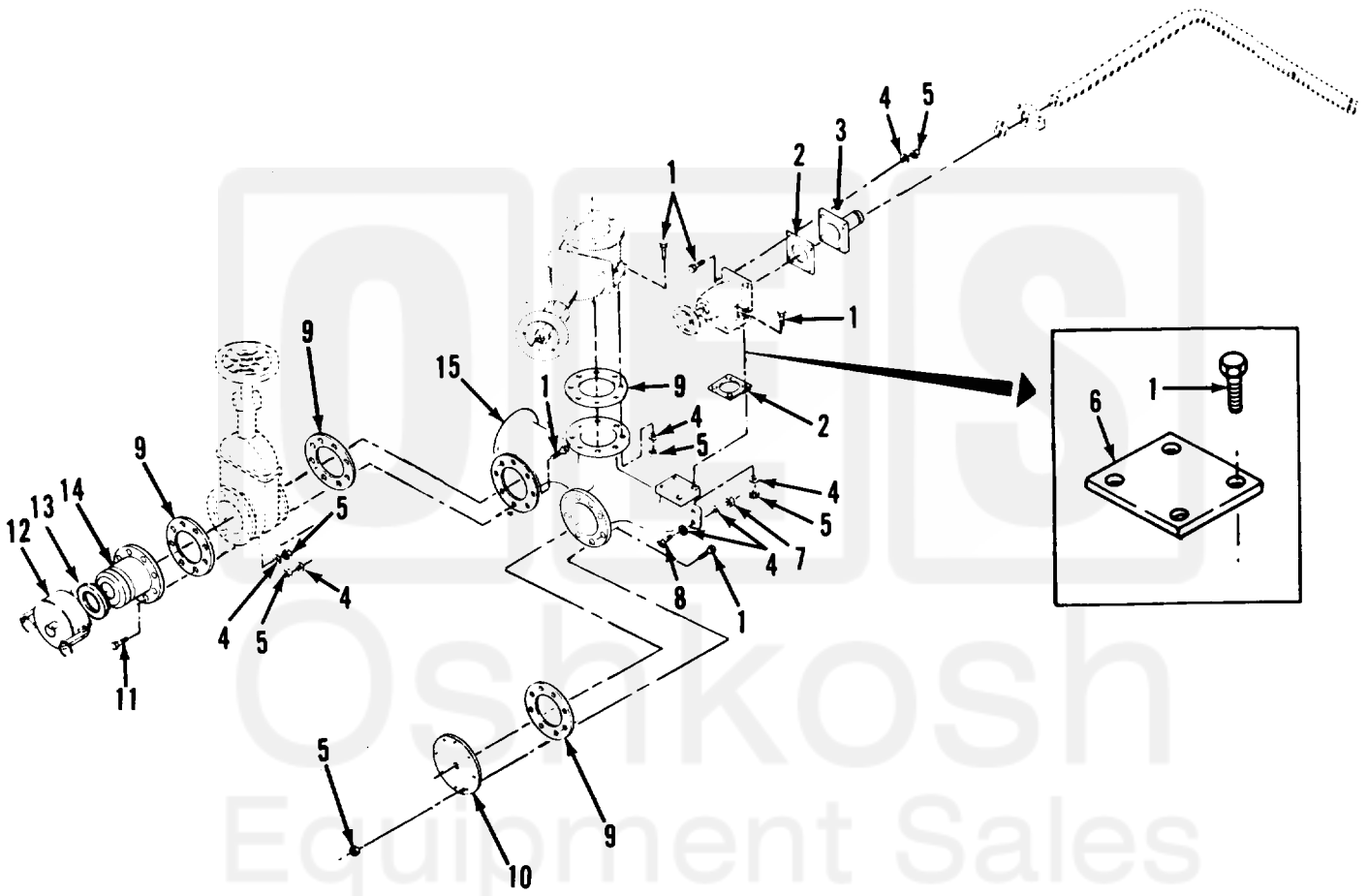
TA502505

FIGURE 121. MANIFOLD AND FLANGE ASSEMBLY, M970 AND M970A1.

Current part is item (12,6,9,13) on diagram. Available at www.oshkoshequipment.com

SECTION II (1) ITEM NO	(2) SMR CODE	(3) CAGEC	TM9-2330-356-24P (4) PART NUMBER	(5) DESCRIPTION AND USABLE ON CODES (UOC)	(6) QTY
GROUP 7203 VALVES, FITTINGS, LINES					
FIG. 121 MANIFOLD AND FLANGE ASSEMBLY, M970 AND M970A1					
1	PAOZZ	96906	MS27183-14	WASHER, FLAT UOC: C73, C91	34
2	PAOZZ	96906	MS90726-63	SCREW CAP, HEX HD UOC: C73, C91	2
3	PAOZZ	96906	MS90727-62	SCREW, CAP, HEXAGON H UOC: C73, C91	2
4	XDFZZ	19207	11670910	ANGLE UOC: C73, C91	1
5	PAOZZ	96906	MS51922-21	NUT, SELF-LOCKIN, HE UOC: C73, C91	34
6	PAOZZ	19207	11670914	GASKET UOC: C73, C91	1
7	PBOZZ	19207	11670912	TEE UOC: C73, C91	1
8	PAOZZ	96906	MS90726-65	SCREW, CAP, HEXAGON H UOC: C73, C91	32
9	PAOZZ	19207	11611885	FLANGE, PIPE UOC: C73, C91	2
10	PAOZZ	19207	11611883	SEAL, NONMETALLIC SP UOC: C73, C91	1
11	PAOZZ	96906	MS35782-6	COCK, DRAIN UOC: C73, C91	1
12	XDOZZ	19207	11668076-2	VALVE, CONTROL UOC: C73, C91	1
13	PAOZZ	19207	8737731	VALVE, GATE UOC: C73, C91	1
14	PAFZZ	05443	10048-A	PACKING, PREFORMED UOC: C73, C91	1
15	XBOZZ	19207	12275261	NIPPLE UOC: C73, C91	1
16	PAOZZ	79154	10871852-1	CLAMP, LOCK UOC: C73, C91	1
17	PAOZZ	19207	10871869-1	SEAL, NONMETALLIC SP UOC: C73, C91	1
18	PAOZZ	19207	11670911	ELBOW, FLANGE UOC: C73, C91	1
19	PAOZZ	81343	4-2 120202BA	ELBOW, PIPE TO TUBE UOC: C73, C91	1
20	XDOZZ	81343	4 120115B	. SLEEVE UOC: C73, C91	1
21	XDOZZ	35078	W581	INSERT UOC: C73, C91	2
22	MOOZZ	19207	12275287-5	TUBING (28.00" LG.) MAKE FROM P/N CPR104420-1 UOC: C73, C91	1
23	PAOZZ	96906	MS29526-2	. CAP, FILLER OPENING UOC: C73, C91	1

Current part is item (12,6,9,13) on diagram. Available at www.oshkoshequipment.com



TA502508

FIGURE 124. PIPING CONTROL ASSEMBLY, M967, M967A1, M969, AND M969A1.

Current part is item (12,6,9,13) on diagram. Available at www.oshkoshequipment.com

SECTION II (1)	ITEM (2)	SMR (3)	TM9-2330-356-24P (4)	(5)	(6)
NO	CODE	CAGEC	PART NUMBER	DESCRIPTION AND USABLE ON CODES (UOC)	QTY
GROUP 7203 VALVES, FITTINGS, ASSEMBLY,					
FIG. 124 PIPING CONTROL ASSEMBLY, M967, M967A1, M969, M969A1					
1	PAOZZ	96906	MS90726-65	SCREW,CAP,HEXAGON H UOC:C72,C92	34
1	PAOZZ	96906	MS90726-65	SCREW,CAP,HEXAGON H UOC:C70,C90	30
2	PAOZZ	19207	11670915	GASKET UOC:C72,C92	2
2	PAOZZ	19207	11670915	GASKET UOC:C70,C90	1
3	PAOZZ	19207	11670916	NIPPLE UOC:C72,C92	1
4	PAOZZ	96906	MS27183-14	WASHER,FLAT UOC:C72,C92	44
5	PAOZZ	96906	MS51922-21	NUT,SELF-LOCKING,HE UOC:C72,C92	40
5	PAOZZ	96906	MS51922-21	NUT,SELF-LOCKING,HE UOC:C70,C90	36
6	PAOZZ	19207	11685973	COVER UOC:C70,C90	1
7	PAOZZ	96906	MS51922-17	NUT,SELF-LOCKING,HE UOC:C70,C72,C90,C92	2
8	PAOZZ	96906	MS90726-63	SCREW,CAP,HEX HD UOC:C70,C72,C90,C92	2
9	PAOZZ	19207	11670914	GASKET UOC:C70,C72,C90,C92	4
10	PAOZZ	23705	11685972	COVER,ACCESS UOC:C70,C90	1
11	PAOZZ	96906	MS90726-64	SCREW,CAP,HX HD UOC:C70,C72,C90,C92	8
12	PAOZZ	96906	MS27028-17	COUPLING UOC:C70,C72,C90,C92	1
13	PAOZZ	96906	MS27030-9	GASKET UOC:C70,C72,C90,C92	1
14	PAOZZ	81718	633LAT2X3	ADAPTER UOC:C70,C72,C90,C92	1
15	PAFZZ	19207	11670913	MANIFOLD UOC:C70,C72,C90,C92	1

END OF FIGURE

Oshkosh
Equipment Sales

124-1

Current part is item (12,6,9,13) on diagram. Available at www.oshkoshequipment.com

Current part is item (12,6,9,13) on diagram. Available at www.oshkoshequipment.com

SECTION II (1) ITEM NO	(2) SMR CODE	(3) CAGEC	TM9-2330-356-24P (4) PART NUMBER	(5) DESCRIPTION AND USABLE ON CODES (UOC)	(6) QTY
GROUP 7203 VALVES, FITTINGS, LINES					
FIG. 125 PIPING CONTROL ASSEMBLY, M970 AND M970A1					
1	PAOZZ	96906	MS90726-65	SCREW,CAP,HEXAGON H UOC:C73,C91	44
2	PAOZZ	19207	11668094	VALVE,ANGLE 2" UOC:C73,C91	1
3	PAFZZ	76364	3116-M	.NUT,WHEEL UOC:C73,C91	1
4	PAFZZ	76364	6593-L	.PACKING UOC:C73,C91	3
5	PAFZZ	76364	3812-J	.DISC SEAT UOC:C73,C91	1
6	PAOZZ	19207	11670915	GASKET UOC:C73,C91	4
7	PAOZZ	19207	12275235	VALVE UOC:C73,C91	1
8	PAOZZ	96906	MS27183-14	WASHER,FLAT UOC:C73,C91	80
9	PAOZZ	96906	MS51922-21	NUT,SELF LOCK, HEX UOC:C73,C91	52
10	PAOZZ	19207	11670916	ADAPTER,STRAIGHT UOC:C73,C91	1
11	PAOZZ	96906	MS51922-17	NUT,SELF-LOCKING,HE UOC:C73,C91	2
12	PAOZZ	96906	MS90727-63	SCREW,HEX HD UOC:C73,C91	1
13	PAOZZ	19207	11670914	GASKET UOC:C73,C91	4
14	XBOZZ	19207	12275268	ADAPTER UOC:C73,C91	1
15	PAOZZ	19207	12275236	ADAPTER UOC:C73,C91	1
16	PAOZZ	96906	MS27030-6	GASKET UOC:C73,C91	1
17	PAOZZ	19207	12275237	COUPLING UOC:C73,C91	1
18	PAOZZ	96906	MS90726-64	SCREW,HEX HD UOC:C73,C91	8
19	PAOZZ	96906	MS27028-17	COUPLING UOC:C73,C91	1
20	PAOZZ	96906	MS27030-9	GASKET UOC:C73,C91	1
21	PAOZZ	81718	633LAT2X3	COUPLING HALF UOC:C73,C91	1
22	PAFZZ	19207	11670913	MANIFOLD UOC:C73,C91	1

END OF FIGURE

125-1

Current part is item (12,6,9,13) on diagram. Available at www.oshkoshequipment.com